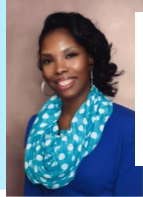


Old or New, "Normal" Hasn't Cut It:

Innovative Strategies to Promote Housing Stability Among Families with Young Children

MLPB's **Spring (BYO) Breakfast** 9:30-11am, May 13, 2020 // Via Zoom

Spotlight on impact at the **household level**



Baraka Floyd
Stanford School of Medicine & MLPB



Allison Bovell-Ammon
Children's Health Watch at BMC



JoHann a Flacks
MLPB

Moderator

Spotlight on impact at the **system change level**



Jeannine Casselmann
MLPB



Yusuf Ali
Vital Village Network at BMC



Brenda Clement
Housing Works RI



Soojin Conover
Vital Village Network at BMC

Moderator

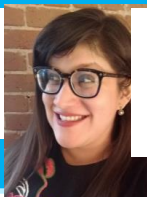
Spotlight on impact at the **policy change level**



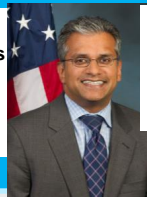
Samantha Morton
MLPB



Emily Benfer
Columbia Law School

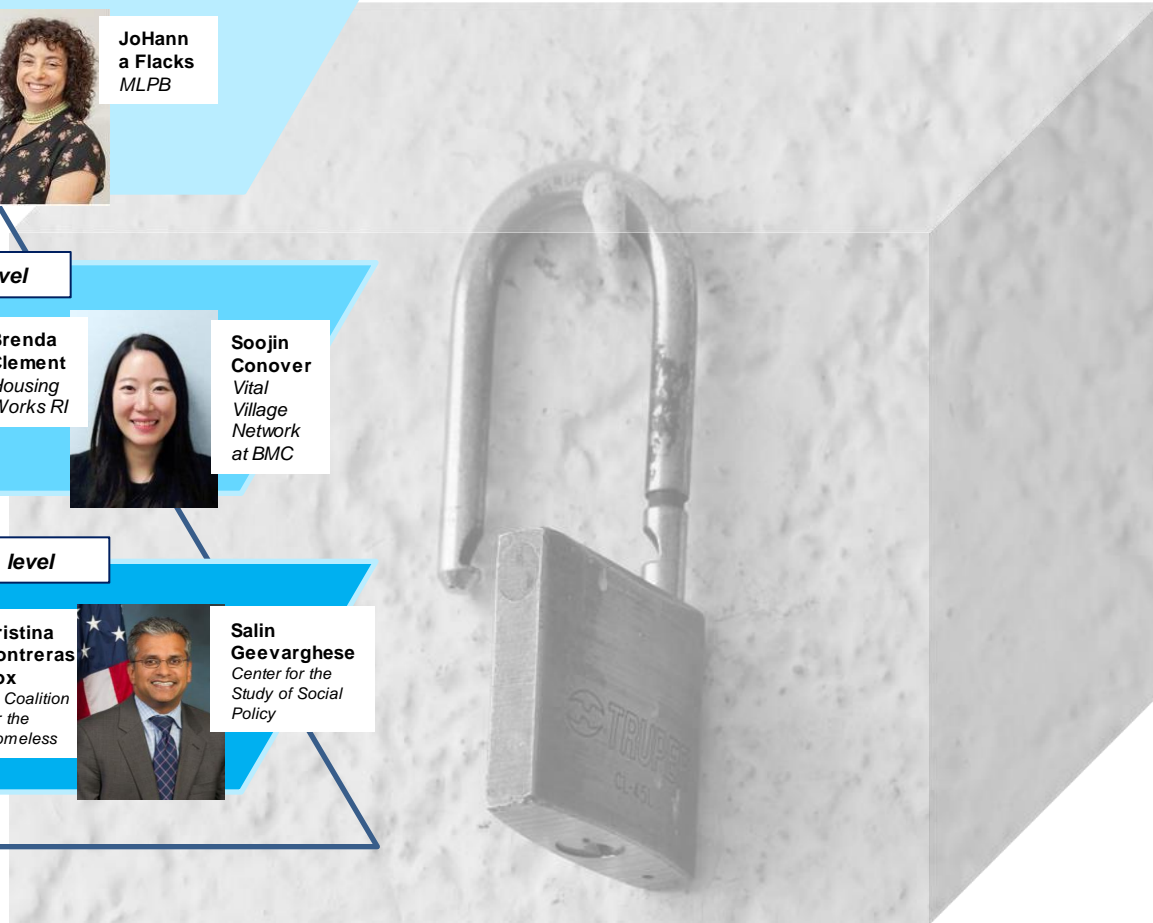


Kristina Contreras Fox
RI Coalition for the Homeless



Salin Geevarghese
Center for the Study of Social Policy

Moderator



Agenda

9:30am-
9:40am:

Welcome
Samantha Morton, MLPB

9:40am-
10:05am:

Innovation with promise at the *household* level
Moderator: Baraka Floyd, Stanford School of Medicine & MLPB
Panelists: Allison Bovell-Ammon, Children's HealthWatch at BMC;
JoHanna Flacks, MLPB

10:05am-
10:30am

Innovation with promise at the *system change* level
Moderator: Jeannine Casselman, MLPB
Panelists: Yusuf Ali & Soojin Conover, Vital Village Network;
Brenda Clement, HousingWorks RI

10:30am-
10:55am

Innovation with promise at the *policy change* level
Moderator: Samantha Morton, MLPB
Panelists: Emily Benfer, Columbia Law School;
Kristina Contreras Fox, RI Coalition for the Homeless;
Salin Geevarghese, Center for the Study of Social Policy &
Mixed Income Strategic Alliance

10:55am-
11:00am

Closing
Samantha Morton, MLPB

First Panel: *Housing stability innovation with promise at the household level*



Allison Bovell-Ammon

Director of Policy Strategy, Children's Health Watch at BMC

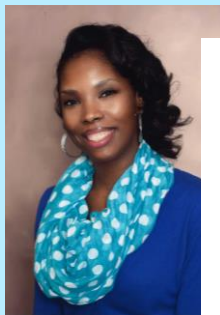
Allison leads federal policy work of Children's HealthWatch as well as health care systems integration of housing and food advocacy locally and nationally. In addition to policy work, she works on multiple projects addressing housing instability among patients and families at BMC. She co-leads *Housing Prescriptions as Health Care for Families*, an innovative project connecting high-health care utilizing families experiencing housing instability with services tailored to improve housing stability and health.



JoHanna Flacks

Legal Director, MLPB

At MLPB, JoHanna links workforce capacity-building services to broader opportunities to inform public policy to reduce health disparities. Before joining MLPB, JoHanna was in private practice, and provided *pro bono* services to the Cape Cod Anti-Discrimination Task Force in its successful campaign to establish the Barnstable County Human Rights Commission. She also served as Assistant General Counsel for the Boston Public Health Commission and Senior Investigator for the Boston Fair Housing Commission.



MODERATOR - Baraka Floyd

Clinical Ass't Professor, Stanford School of Med.; Unlocking Access Consulting Lead, MLPB

Dr. Baraka D. Floyd is a pediatrician at Stanford School of Medicine and co-medical director of the Peninsula Family Advocacy Program, Stanford's Medical-Legal Partnership. She has successfully implemented local initiatives to address social determinants of health, including: Post-Partum/Perinatal Depression Screening, Pediatrician Driven Universal Social Determinants Screening, and a diaper distribution program.

Second Panel: *Housing stability innovation with promise at the system change level*



Yusuf Ali

Network Coordinator, Vital Village Network at BMC

Yusuf Ali grew up and has worked professionally in the communities of Dorchester, Roxbury and Mattapan over the last 8 years. Yusuf graduated with a B.S. in Business Administration from Florida A&M University in 2008. Yusuf is passionate about holistic healthy lifestyles and has focused his work towards empowering and providing families & individuals with resources in the areas of access to wealth, food access, and civic engagement.



Brenda Clement

Director, HousingWorks RI at Roger Williams University

Prior to joining HWRI, Brenda served as Executive Director of Citizens Housing and Planning Association, Executive Director of the Housing Action Coalition of RI, and as Executive Director of the Housing Network, the RI trade association for community development corporations. Brenda is a founding member of the New England Housing Network and served on the Board of the National Low Income Housing Coalition. She has received multiple awards from RI Housing; the RI Dep't of Health, and Bank of America.



Soojin Conover

Senior Data Analyst, Vital Village Network at BMC

Soojin is a public health professional passionate about advancing equitable health policy, addressing health inequities, and promoting data capacity building. Her experience includes environmental health and health service research incorporating spatial information to provide evidence-based policy implications. She is leading VVN's implementation of a participatory data engagement strategy and an equity-focused shared data system.



MODERATOR -Jeannine Casselman

Legal Advisor, MLPB

Jeannine was previously with the RI Center for Law and Public Policy and served as the Program Director for the RI Medical-Legal Partnership from 2011-2016. She graduated from Roger Williams University School of Law in 2009 where she focused on public interest law, interning with the RI Commission for Human Rights, South Coastal Counties Legal Services and the Community Mediation Center of RI.

Third Panel: *Housing stability innovation with promise at the policy change level*



Emily A. Benfer, *Visiting Associate Clinical Professor &
Director of the Health Justice Advocacy Clinic, Columbia Law School*

Emily is a national expert on health justice strategies to secure health equity and social justice for low-income and traditionally marginalized communities. She was a Visiting Distinguished Scholar and Senior Fellow at Yale Law School Solomon Center for Health Law & Policy; and a Clinical Professor of Law at Loyola University Chicago School of Law where she founded the Health Justice Project.



Kristina Contreras Fox
Policy Analyst, RI Coalition for the Homeless

Kristina works as the Policy Analyst and lobbyist for the RI Coalition for the Homeless, a dynamic coalition that works to prevent and end homelessness in the Ocean State. A graduate of Assumption College, Kristina has worked in politics and advocacy for 10 +years, including serving as Director of Organizing for Ocean State Action, Field Director for Providence Mayor Jorge Elorza in his inaugural run, and 1st Vice President of the Young Democrats of America.



Salin Geevarghese

President & CEO, SGG Insight, LLC; Senior Fellow, Center for the Study of Social Policy
Salin is the President & CEO of SGG Insight, LLC,; serves as Senior Fellow at CSSP; and is founding Director of the Mixed-Income Strategic Alliance and its Innovation and Action Network (a collaboration of CSSP, the National Initiative on Mixed Income Communities at Case Western Reserve Univ. and Urban Strategies, Inc.) From Apr. 2014 to 2017, Salin served as HUD's Deputy Assistant Secretary for the Office of Int'l and Philanthropic Innovation (within the Office of Policy Dev. and Research).



MODERATOR - Samantha Morton *CEO, MLPB*

Samantha is a national expert on the power of justice to advance health, and on the critical role of health ecosystem workforces in partnering with people to meet their health-related social needs (HRSN) and tackling population-level social determinants of health (SDOH) – all in ways that promote democratization of access to justice. A co-developer of the DULCE approach, she is leading MLPB's evidence-based integration of legal problem-solving strategies within accountable care, patient-centered medical home, and early childhood sector contexts.

Key References & Tools



References:

- [Housing Intervention For Medically Complex Families Associated With Improved Family Health: Pilot Randomized Trial \(2020\)](#)
- [Housing as a Prescription for Health, Now and in the Future \(2020\)](#)
- [Evaluating Community Approaches to Preventing or Mitigating Toxic Stress: Research Brief 2 – Implementing DULCE and I-SCRN \(2019\)](#)
- [Policies to Reduce Lead Exposure: Lessons from Buffalo and Rochester \(2018\)](#)
- [10 Policies to Prevent and Response to Childhood Lead Exposure \(2017\)](#)
- [The Impact of Neighborhoods on Intergenerational Mobility - Executive Summary \(2015\)](#)

Tools:

- [MLPB COVID-19 *Digital Digest*](#)
- [Vital Village Network Community Housing Data Tool](#)
- [COVID-19 Housing Policy Scorecard](#)

Additional References



- [Legal Partnering for Child Health: Snapshots of Programs Across California](#) (Feb. 2020)
- [The “Cavalry” Isn’t Coming. We All Must Become the Cavalry](#) (Nov. 2019)
- [Legal Partnering for Child and Family Health: An Opportunity and Call to Action for Early Childhood Systems](#) (Sep. 2019) (Samantha Morton with Stephanie Doyle; published by the Center for the Study of Social Policy)
- [DULCE Legal Partners Drive Improvements in Medi-Cal Enrollment Procedures for Babies in Two California Counties](#) (Jan. 2019)
- [Immigration-Informed CHWs Link Families to Economic, Social, Legal Supports](#) (Sep. 2018)
- [Resiliency as Prevention of Diseases of Despair and Structural Violence](#) (Jul. 2018)
- [A Strengths-Based Approach to Screening Families for Health-related Social Needs](#) (Jan. 2018) (co-authored with Renée Boynton-Jarrett; published by the Center for the Study of Social Policy)
- [Risk Adjustment’s New Frontier: Social Determinants of Health](#) (Apr. 2017) (co-authored with JSI)
- [Medical-Legal Strategies to Improve Infant Health Care: A Randomized Trial](#) (Jul. 2015)